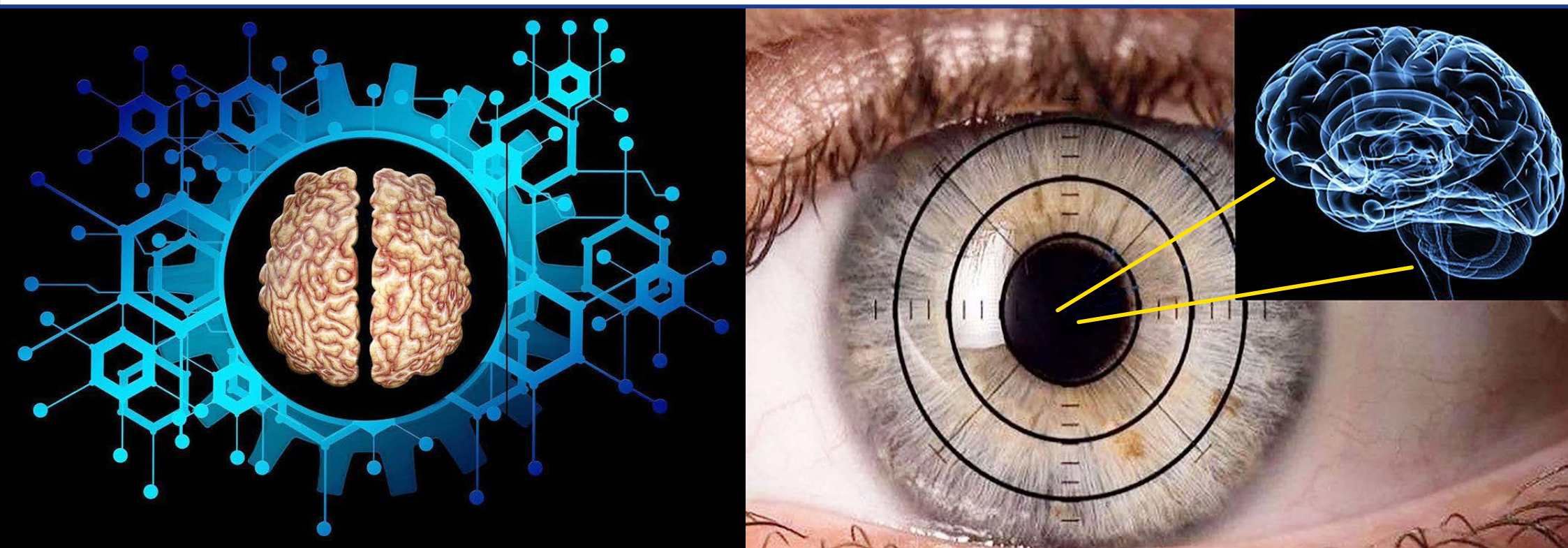


EUROPEAN FRONTIERS IN NEUROSCIENCES



The Long and Winding Road: Impact of Mevalonate Pathway Defects on Retinal Structure and Function

Steven J. Fliesler

PhD SUNY Distinguished Professor,
Meyer H. Riwchun Endowed Chair Professor of Ophthalmology.
Vice-Chair for Research, Department of Ophthalmology, Jacobs School
of Medicine and Biomedical Sciences, University at Buffalo, Buffalo, NY (USA)

**Catania, Torre Biologica
Aula Magna "Umberto Scapagnini"
30 October 2023 - 17:00-18:00**

Promoted by

Professors Filippo Drago and Claudio Bucolo
Department of Biomedical and Biotechnological Sciences - University of Catania